

DATA DISPLAY GROUP

USER'S MANUAL

ArtistaUSB/NET

Touch Calibration V2.2.0

Version 2.5

20.01.2012

©Distec GmbH, 2012

Table of Contents

1. Introduction	3
2. Minimum Requirements	3
3. Installation	3
3.1. Artista Windows Driver	3
3.2. Artista Calibration Tool	3
4. How to Use Artista Touch Features	4
4.1. Left Click.....	4
4.2. Right Click.....	4
4.3. Double Click.....	4
5. How to Use the Artista Touch Calibration Tool	5
5.1. Identify Tab.....	5
5.1.1. Calibration Process	6
5.1.2. Calibrate using filter Depth	7
5.1.3. Pressure Threshold	7

1. Introduction

ArtistaUSB and ArtistaNET support 4-wire resistive touch screens. Resistive touch screens are recommended for point of sale systems-kiosks (POS), restaurants, control or automation systems, medical applications, standard kiosks, and others. A resistive touch screen can be used with a finger or stylus. Resistive touch screens are durable and able to withstand a variety of harsh environments. However they should be protected from the damage of sharp objects. Resistive touch screens are highly reliable since they do not have to be recalibrated when environmental conditions change.

In order to make ArtistaUSB/NET touch work on Windows environment, the Artist Windows drivers (Artista Mainclass, Artista Netbus and ArtistaDisplay drivers) and the calibration tool must be installed and used.

Before using a resistive touch screen, a calibration is required to align the touch screen's coordinates to the TFT LC Display. The Artista Touch Calibration Tool is an application designed to calibrate ArtistaUSB/NET touch screen pointer positioning and also to modify the user-specific properties related to the interpretation of the user's touch.

2. Minimum Requirements

- ArtistaUSB, ArtistaUSB-II, ArtistaNET, ArtistaNET-II
- Windows XP SP2 or higher
- Windows Vista SP1 or higher
- Windows2003 SP2 or higher

3. Installation

3.1. Artista Windows Driver

Simply install the driver as seen in the "ArtistaSeriesSoftwareManual.pdf" document, which is supplied with the driver.

3.2. Artista Calibration Tool

When you click on the "ArtistaCalibSetup.exe", you will see the initial setup page. Following the instructions in the setup, you will have your application installed on your system.



4. How to Use Artista Touch Features

To touch the screen you can use either your finger or a stylus.

4.1. Left Click

When you touch the screen once a left click will be implemented.

4.2. Right Click

If you keep pressing the touch on the same point for a defined period, you will realize a right click upon releasing. The period is 1000 milliseconds (1 second).

4.3. Double Click

You can realize a double click out of two sequential left clicks. To adjust the time period between these two left clicks, Windows mouse properties should be used (See Figure 4.1).

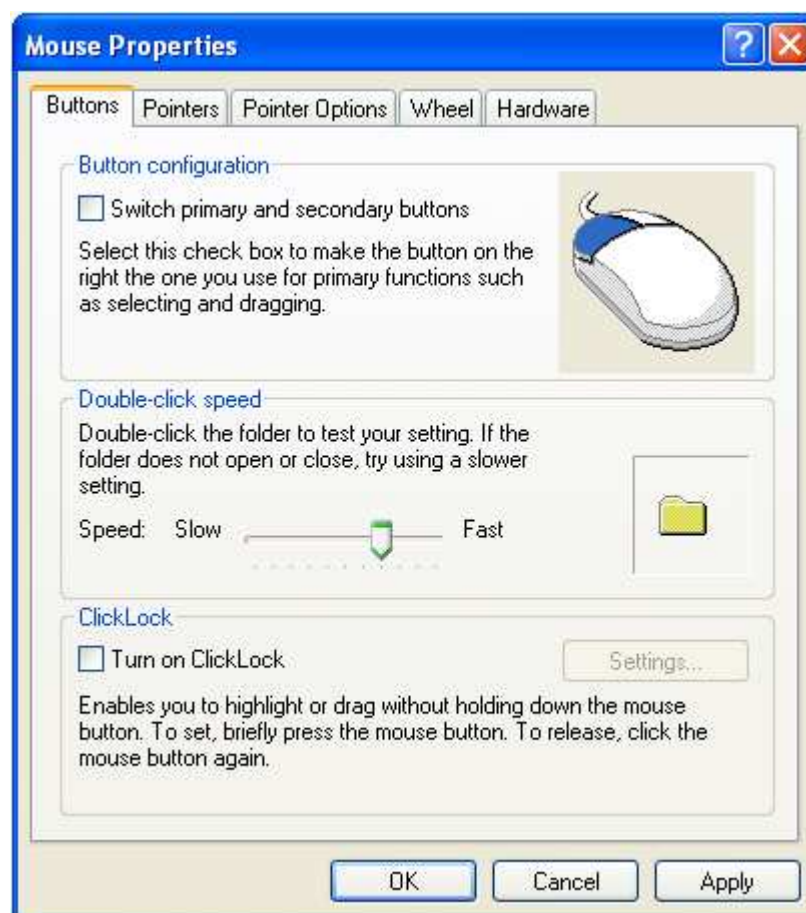
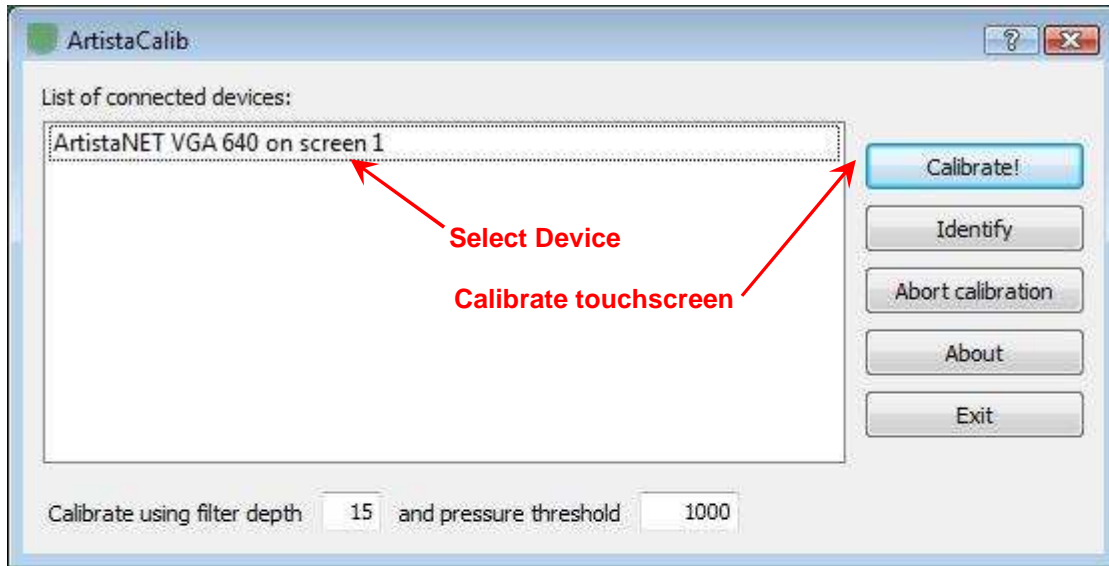


Figure 4.1

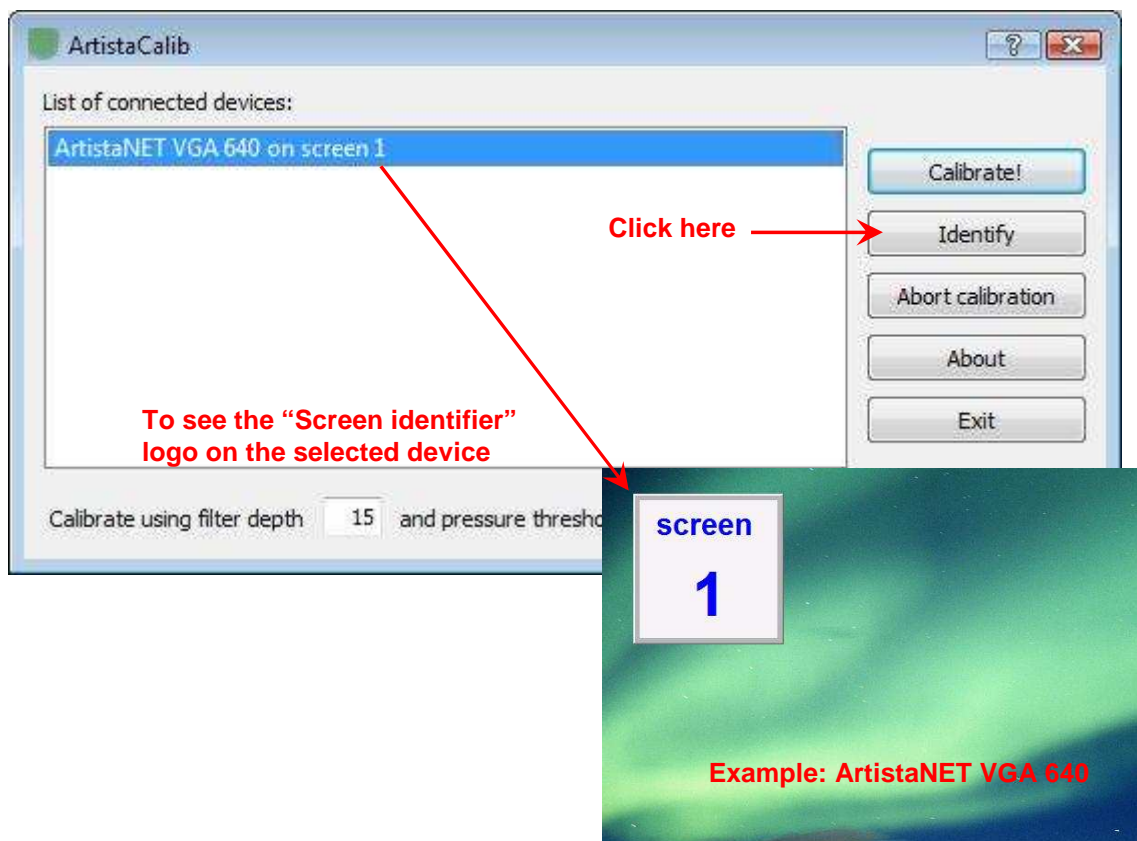
5. How to Use the Artista Touch Calibration Tool

When all drivers were installed, you calibrate your touch screens by simply selecting the device from the "List of connected devices" and then by clicking on "Calibrate!"



5.1. Identify Tab

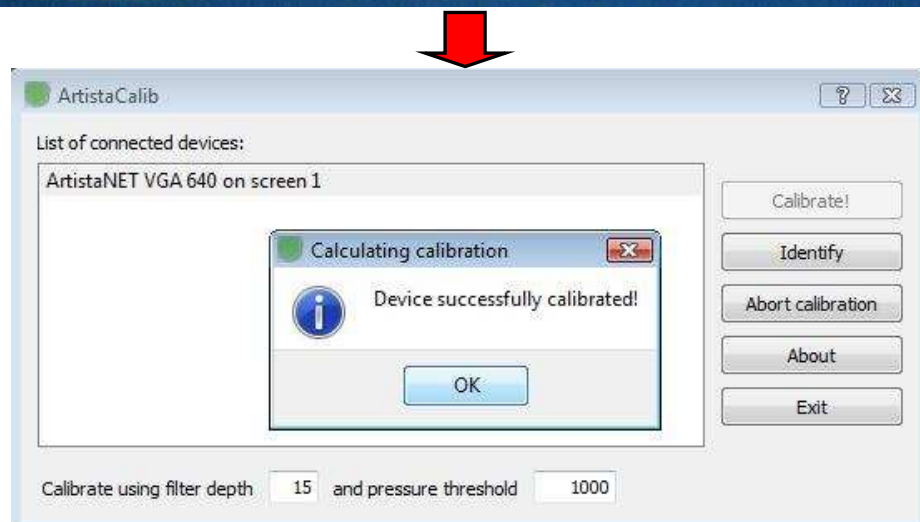
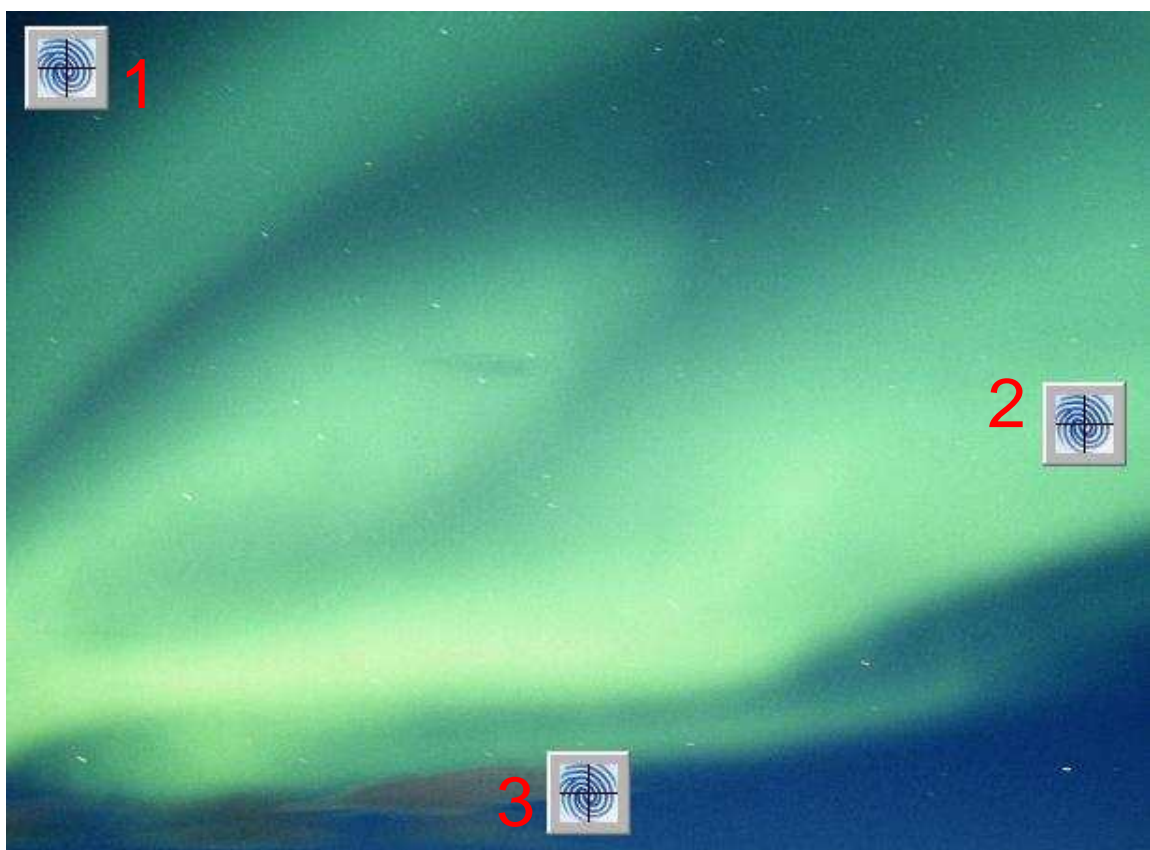
This tab shows you the screen, where the selected device is placed. By clicking on "Identify", an icon will appear in the upper left part of the selected device. So you can find the device, which you wish to calibrate easier.



5.1.1. Calibration Process

After having chosen a device for calibration, you will see touch indicator fields on the device screen (1-3). After one another, these indicators will appear and you just have to press the spot on your touchscreen, where these markings appears (3-dot calibration system). After a successful calibration you will get a note that the calibration was successful.

NOTE: Be sure that you always hit the exact middle of the indicators, otherwise, your screen will not be correctly calibrated and might have an offset when it is being used. Also, be sure, that the touch surface is not obstructed or pinched by other objects, or the indicator will go to the next mark without proper calibration. In that case, remove all obstructing items/parts from the touch surface and click again on calibrate to do it again.



5.1.2. Calibrate using filter Depth

Filter depth controls the jitter behaviour and response time of the mouse pointer when pressing the touch screen. Smaller values result in a quick response but show a jittery mouse pointer, higher values result in less jitter but show a smoother response. The minimum and maximum filter depth values in pixels are 2 and 40 respectively. The value defaults to 15 after calibration.

5.1.3. Pressure Threshold

User touch inputs below the defined pressure threshold value are ignored.
The smaller the value is, the more pressure must be applied to the touch screen to get valid touch response. If the value is higher, the less pressure must be applied to get valid touch data.
The value defaults to 1000 after calibration.



DATA DISPLAY GROUP

Our company network supports you worldwide with offices in Germany, Turkey, Great Britain and the USA. For more information please contact:



DISTEC GmbH

Distec GmbH

Augsburger Str. 2b
82110 Germering
Germany
Phone: +49 (0)89 / 89 43 63-0
Fax: +49 (0)89 / 89 43 63-131
E-Mail: info@distec.de
Internet: www.distec.de



DATA DISPLAY TEKNOLOJİ

Data Display Teknoloji Elektronik San Ve Diş Tic A.Ş.

Kustepe Leylak Sok.
Nursanlar Is Merkezi
Kat. 6 No: 21
Sisli / Istanbul
Turkey
Phone: +90 (0)212 / 356 04 20
Fax: +90 (0)212 / 356 04 25
E-Mail: info@datadisplay.com.tr
Internet: www.datadisplay.com.tr



DISPLAY TECHNOLOGY

Display Technology Ltd.

A2 Spectrum Business Centre
Anthonys Way, Medway City Estate
Rochester, Kent, ME2 4NP
United Kingdom
Phone: + 44 (0)1634 / 29 55 55
Fax: + 44 (0)1634 / 29 55 43
E-Mail: info@displaytechnology.co.uk
Internet: www.displaytechnology.co.uk



**Apollo
Display
Technologies**

A Data Display Company

Apollo Display Technologies, Corp.

85 Remington Blvd.
Ronkonkoma, NY 11779
United States of America
Phone: +1 631 / 580-43 60
Fax: +1 631 / 580-43 70
E-Mail: info@apollodisplays.com
Internet: www.apollodisplays.com