

---

**DATA DISPLAY GROUP**

---

# Manual

## **Artista Series Driver Installation & Setup for Windows™**

TFT Display Controller

Rev 4.0  
Tuesday, April 24, 2012

The information provided in this document has been carefully checked and believed to be reliable. However, Distec takes no responsibility for any failure or product damage caused by the application of this information. Please check all connections carefully against the data sheet. Distec products are not intended for use in systems where product failures could possibly result in personal injury. All trademarks contained in this document are registered trademarks of their respective owners.

All specifications are subject to change without notice.

## Table of Contents

1	Revision History .....	3
2	Getting started – Quick Installation Guide.....	4
3	Artista Driver Installation .....	5
	Driver Pre-Installation .....	5
3.1.1	ArtistaMainClass driver installation .....	6
3.1.2	Netbus Driver Installation.....	9
3.1.3	ArtistaDesktop driver (ArtistaDesktopWDDM for Windows 7 !)	11
3.1.3.1	Desktop Assignment .....	11
3.1.3.2	ArtistaDesktop (3D) driver installation.....	13
	Driver Post-Installation (Windows XP).....	16
3.1.4	Artista Display Device installation.....	16
3.1.5	Touch Screen Driver Installation.....	17
4	Uninstalling the drivers.....	18
4.1.1	Using the Registry Cleaner .....	19
5	Artista Graphics Driver Usage.....	20
5.1.1	Attach / Detach Artista Devices .....	20
5.1.2	Artista Devices in the Device Manager.....	21
5.1.3	Adjusting the backlight.....	21
6	Touch screen handling.....	22
7	News and Updates .....	22

## 1 Revision History

Date	Rev.No.	Description	Page
27/03/2007	1.0	Initial draft	
14/09/2007	1.1	Revised edition	
04/08/2008	2.0	Vista support	
15/12/2008	x.x	Additions	
08/01/2009	2.1	Revised ArtistaNET hardware reset information	19
28/01/2009	2.2	Documentation alignments and content menu revised	
23/03/2009	2.4	Documentation only for Artista Driver install and setup	
19/06/2009	2.5	Textual fixes and additions	---
27/08/2009	2.6	Textual updates	---
13/10/2009	2.7	New pictures added and textual changes for new driver 4.0	---
10/12/2009	2.8	Textual updates	
05/19/2010	2.9	Changes due to removed WindowsVista support	
07/12/2010	3.0	Windows 7 support revision	
08/06/2010	3.1	Minor fixes in textualls because of misunderstanding	5, 11
10/01/2010	3.2	Windows 7 64bit additions	4, 5, 11, 18
10/13/2010	3.3	Fixed some misunderstandings in text	
11/18/2010	3.4	Added notes for dynamic/static mode support in Windows 7	
03/17/2011	3.5	Textual updates	1,14
02/28/2012	3.6	Textual updates of company contact informations	last
24/04/2012	4.0	Release of 6.0.0.xxxxx driver / Fitting of manual	

## 2 Getting started – Quick Installation Guide

This chapter is intended to provide fast and easy access to our Artista™ series devices.

**The following operating systems are supported by our software:**

- Windows<sup>1</sup> 2003 Server (requires Service Pack 1 or higher)
- Windows XP (requires Service Pack 2 or higher)
- Windows 7 (tested on Ultimate)
- Windows 7 x64 (tested on Ultimate)
- 

**To install and setup an Artista device, follow these steps:**

- Ensure that network cable is connected before board is powered up
- Install the base driver package
  - First, always install the “**ArtistaMainClass<sup>2</sup>**” driver!
  - Additionally, install the “**ArtistaDesktop<sup>2</sup>**” driver to use the Windows desktop extension.
    - Choose “Static” or “Dynamic” assignment (see [Chapter 3.1.3.1](#) for details) TODO
- Reboot your system (when the ArtistaDesktop driver is being used)
- If you wish to use ArtistaNET devices
  - Install the Netbus driver package “**ArtistaNetBus<sup>2</sup>**”
  - Check your network settings
  - ➔ **Please ensure that you change the default settings if you install more than one ArtistaNET**
    - ArtistaNET/MEDIA default settings:
      - IP-Address: 192.168.0.1
      - Netmask: 255.255.255.0
      - Artista Server-IP: 192.168.0.100
      - Login name: Artista
      - Password: Artista
      -
    - To access the ArtistaNET configuration client, enter <https://192.168.0.1> in your web browser.
    - Open port TCP/28242 & 28243 in your desktop firewall (for your first try, it is recommended that you temporarily disable any firewalls)
- Connect the Artista Device to your system
- Follow the steps in the “Found new Hardware Wizard” to complete installation

**Note:** On 64bit versions of Windows7, please use the appropriate driver packages with “x64” endings! Otherwise, the 32bit versions will not run or even install on the 64bit version of Windows7

<sup>1</sup> Windows is a registered trademark of the Microsoft Corporation.

<sup>2</sup> Only on Windows 7, you must run the corresponding “Setup.exe” file as administrator!

## 3 Artista Driver Installation

The installation procedure is completed in two steps. We'll call them Pre-Installation and Post-Installation. The Pre-Installation is required due to the way display drivers are handled by Windows operating systems.

### Installation CD autorun menu

We provide an easy to understand installation interface, which will automatically appear as soon as the driver CD is being inserted and the autorun feature of your PC is enabled.

If not, simply click on the included "autorun.exe" file in the root folder of your CD.

### Selecting the appropriate driver

- First, always install the "**ArtistaMainClass**" driver
- If you want to use **ArtistaNET** devices please install the additional package:
  - **Artista Netbus (normal mode)**
- ➔ **These drivers are needed in order to use the ArtistaSDK, ArtistaControlCenter and the ArtistaDisplayPrinter.**
- If you wish to use the **Windows Graphics Driver** please install the additional package:
  - **ArtistaDesktop (Win2003, WinXP)**
  - **ArtistaDesktop3D (Windows7 32bit only!!)**
  - **ArtistaDesktop3Dx64 (Windows7 64bit only!!)**

### NEW:

- **IMPORTANT:** If only ArtistaNET is being used, just install the **Artista NetBus driver (raw mode) !**  
**By using the raw mode driver, ArtistaDesktop Driver will not work (no desktop extension)!**

### Driver Pre-Installation

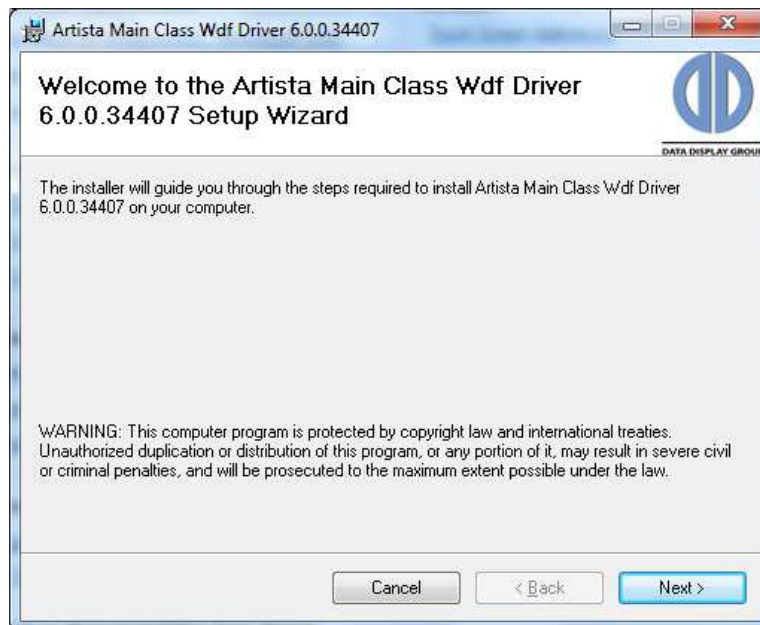
Please ensure that no Artista Device is connected to your system during the Pre-Installation phase.

**Remember:** On 64bit versions of Windows7, please use the appropriate driver packages with "x64" endings! Otherwise, the 32bit versions will not run or even install on the 64bit version of Windows7

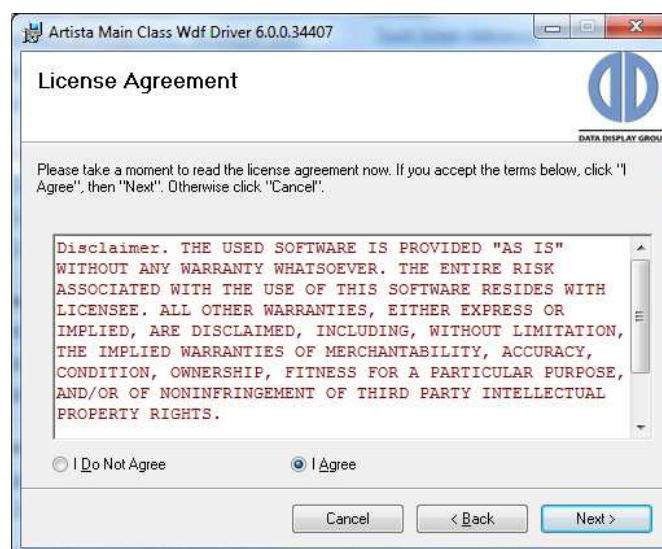
## 3.1.1 ArtistaMainClass driver installation

The **Artista Main Class Driver** provides the basic driver functionality needed for the **ArtistaControlCenter (ACC)** and other applications created with the **Artista SDK**.

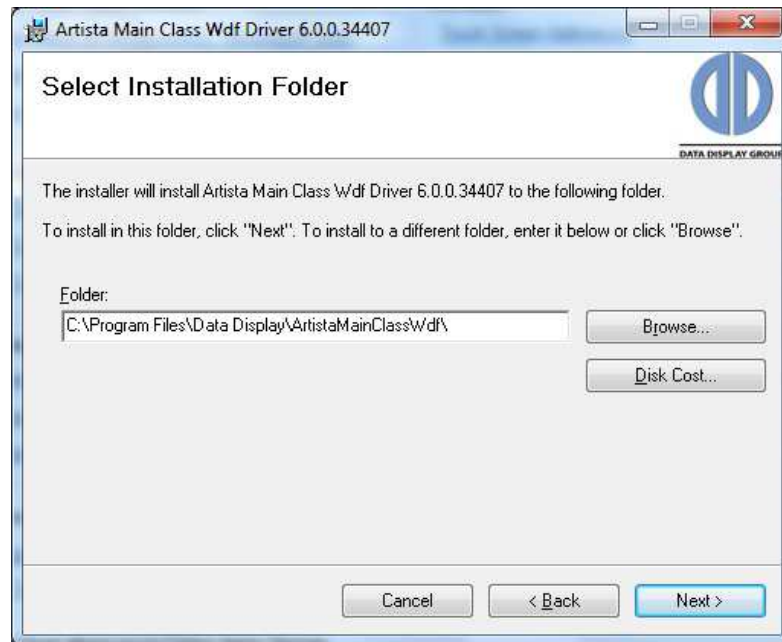
Select "Install ArtistaMainClass driver" on the Autorun Menu screen.



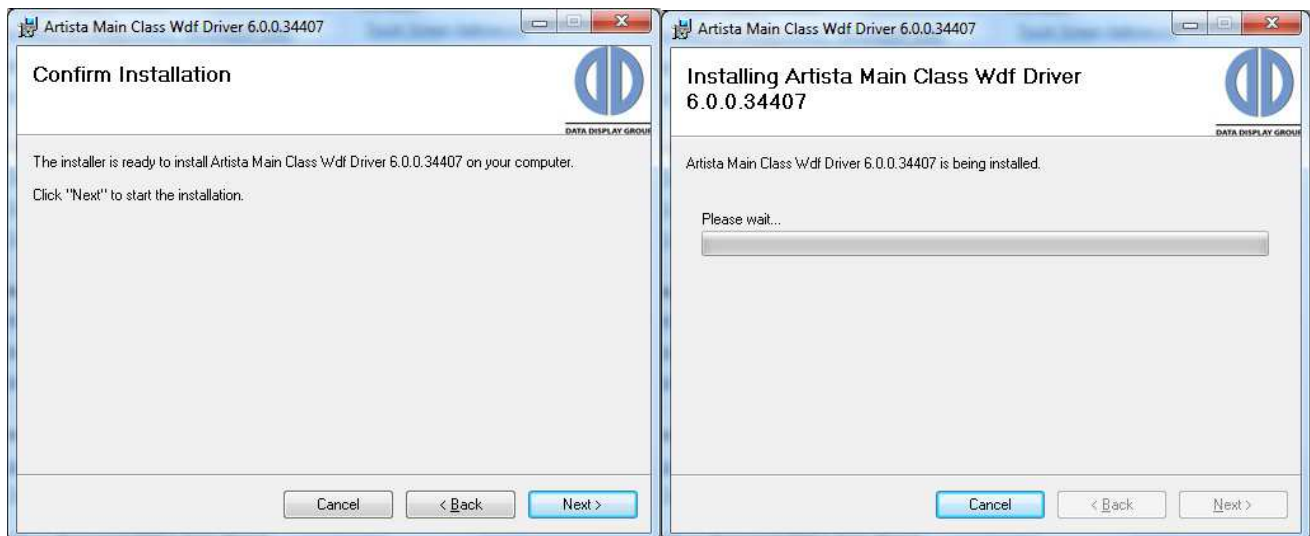
Click "Next".



The dialog box containing the "End-User License Agreement" appears. Select "I Agree / I accept the terms in the License Agreement" and then click "Next".

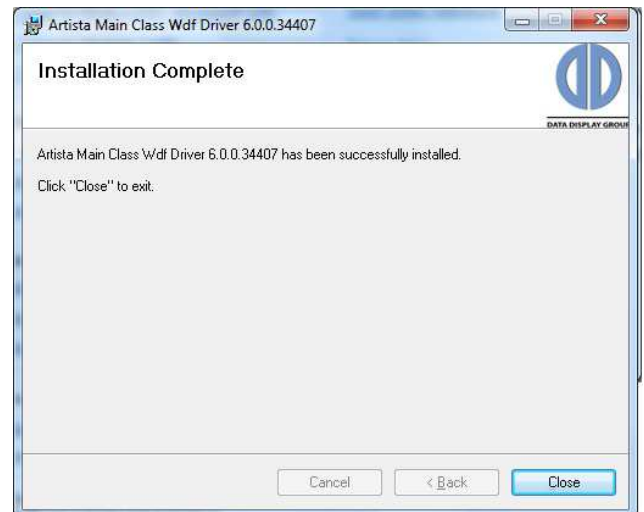
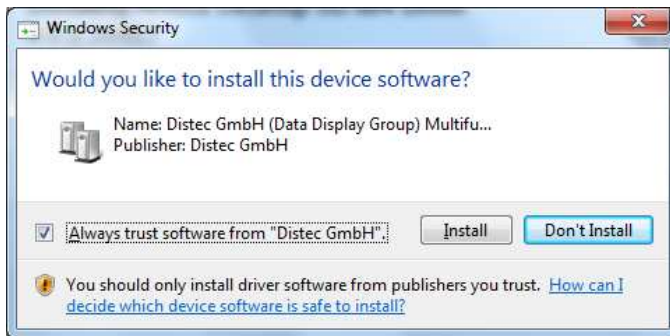


Click "Next" for default folder or "browse" to a different.



Click "Next / Install"

The installation can take several minutes, so do not cancel the installation prematurely. Also, when asked to trust driver, click on "Always trust software", otherwise it will appear again everytime the drivers are installed.



**Note:** The driver has not passed the Logo testing, so when you are asked if you wish to continue the installation, you'll need to select "Allow" several times

Click "Close / Finish".

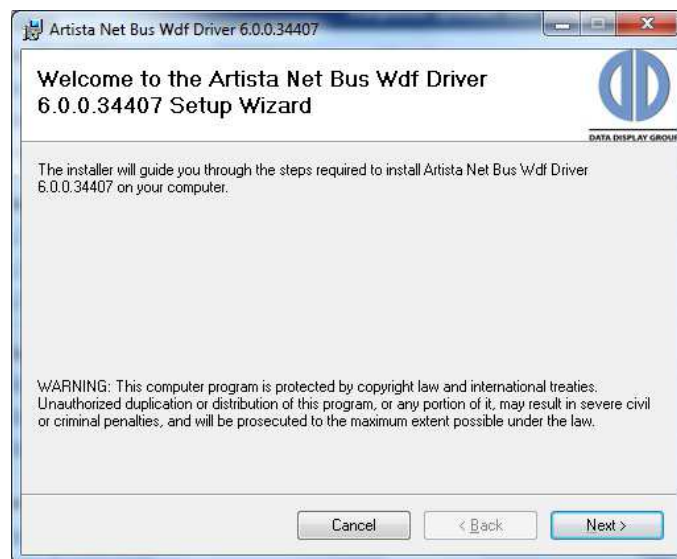


## 3.1.2 Netbus Driver Installation

If you wish to use ArtistaNET devices, you must additionally install the **ArtistaNetBus** driver package.

The **ArtistaNET Bus Driver** provides the functionality necessary to control ArtistaNET devices using either our display driver or the SDK.

Select "Install ArtistaNetBus driver" on the Autorun Menu screen.

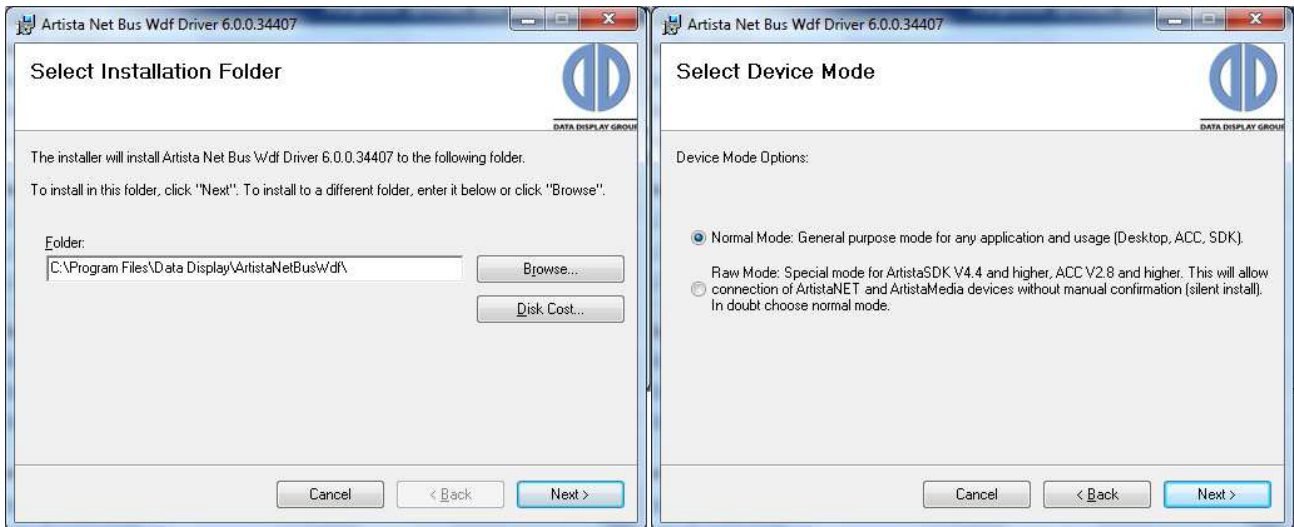


Click "Next" to continue

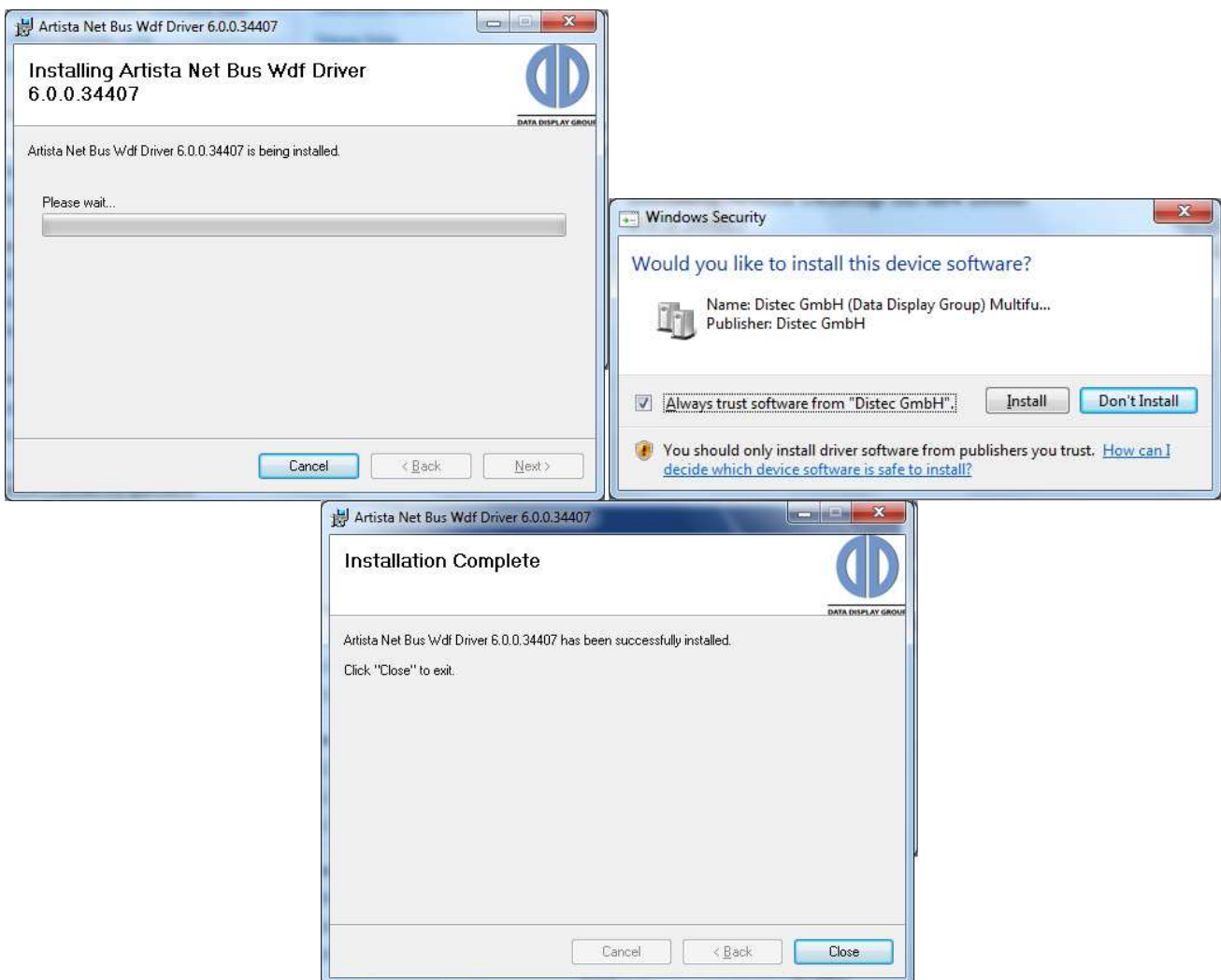
The dialog box "End-User License Agreement" appears.



Select "I Agree / I accept the terms in the License Agreement" and then click "Next"!



Click "Next" for default folder or "browse" to a different. Select the "normal mode" so far.  
And then again click "Next" To start installation



Click "Close / Finish".  
The driver installation is now complete.

### 3.1.3 ArtistaDesktop driver (**ArtistaDesktopWDDM for Windows 7 !**)

The **Artista Desktop** driver allows the use of the **Artista Display Device** as a Windows desktop extension. After the Pre-Installation of the **ArtistaDesktop** driver package, Windows must be restarted.

#### **Limitations:**

The Windows graphics subsystem allows for the use of up to 10 (6 using Windows7 using 2Gb of physical RAM!!) concurrent display devices (including the one designated as the primary display – typically your internal VGA-Card), e.g., one main monitor plus 9 Artista devices on WindowsXP, one monitor plus 6 Artista on Win7.

**Note: Do not connect more than 6 devices on Win7 when using this driver, otherwise detection errors will occur, which could lock the system!**

**On Windows 7, the main monitor association is fixed, so no Artista display can be used as main monitor**

**For some technical reasons, the Artista Desktop 3D drivers prevents the Artista Display being the main monitor. For applications where such a feature is mandatory please ask your sales contact person for customisation.**

#### 3.1.3.1 Desktop Assignment

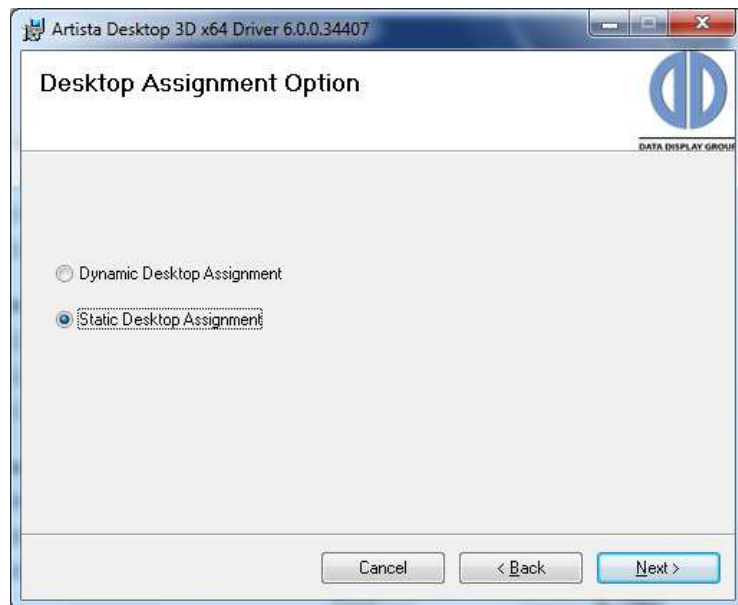
##### *Characteristics:*

During installation you are asked to choose the desktop assignment behavior. You can select between **Dynamic Desktop Assignment** and **Static Desktop Assignment**. For further information, please refer to the detailed paragraphs below.

For each Artista device detected, a “virtual graphics board” is created by the service software. This service manages Artista-specific assignments between the virtual graphics boards and Artista devices. It is hereafter referred to as “**Artista Service**” in this document.

If **Dynamic Desktop Assignment is selected**, the image on the external monitor returns to the primary display after disconnecting the cable or powering-off of the external unit

With **Static Desktop Assignment** selected it is assured that the virtual graphics board persists even after the corresponding Artista device is disconnected. Both the screen content of the external monitor and the positioning of the extended desktop are kept virtually available. When reconnecting the external unit, the original image reappears on the display



## Dynamic Desktop Assignment

If a new **Artista Display Device** is detected, the **Artista Service** assigns it to the next available unassociated virtual graphics card. If there aren't any available, a new one will be installed by the **Artista Service**. This will force a reboot.

If an **Artista Display Device** is being disconnected, the **Artista Service** disassociates the virtual graphics card making it available for the next **Artista Display Device** that will be connected.

### Note:

If the service disassociates a virtual graphics card the currently running applications will be minimized and moved back to the primary display!

## Static Desktop Assignment

If a new **Artista Display Device** is detected, the **Artista Service** assigns it to a virtual graphics board, which is identified by a unique identification number. If the newly connected Artista device hasn't been used with this computer before, a new unique identification number will be installed by the **Artista Service**. This will require a reboot.

This assures that the same physical **Artista Display Device** will always occupy the same Windows desktop display.

If **Static Desktop Assignment** is selected during installation, a unique **Artista Display Device** is assigned permanently to a virtual graphics board – independent from the current Artista connection state.

This behavior is comparable to common VGA graphics cards.

### Note:

Under some circumstances it is possible that for example a Windows alert window will block your computer if the required Artista Device is not connected.

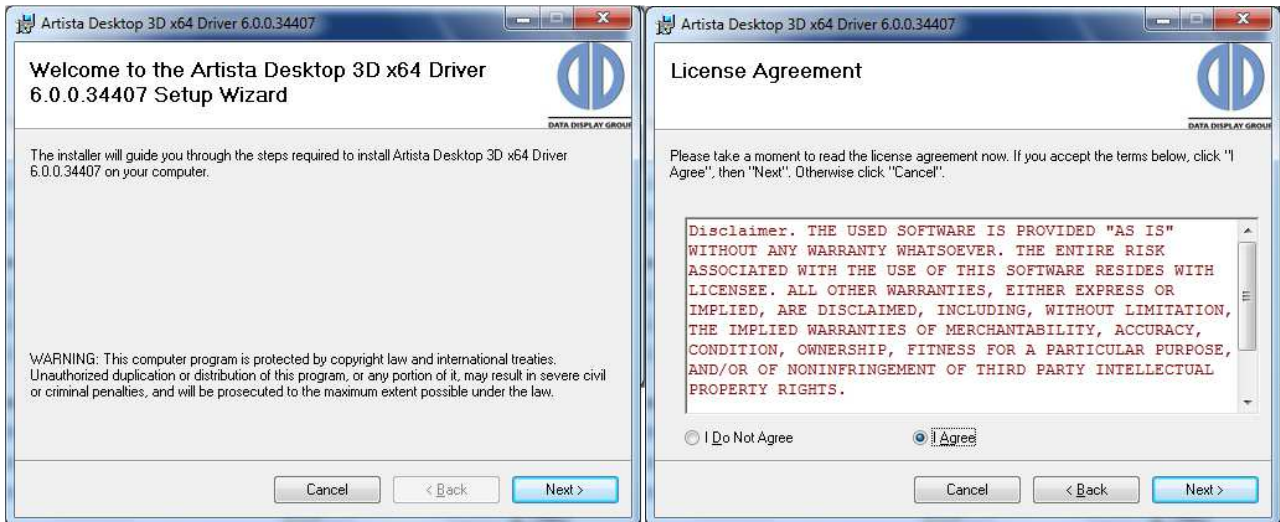
If you plan to use this feature and you are unsure, please contact your local sales office.

### Note:

**Static Desktop Assignment** does not work reliable with **ArtistaUSB** firmware versions below version 4.x. If you are not certain of the firmware version, select **Dynamic Desktop Assignment**. This does not apply to the **ArtistaNET**. All **ArtistaNET** versions work fine with both desktop assignment variants.

## 3.1.3.2 ArtistaDesktop (3D) driver installation

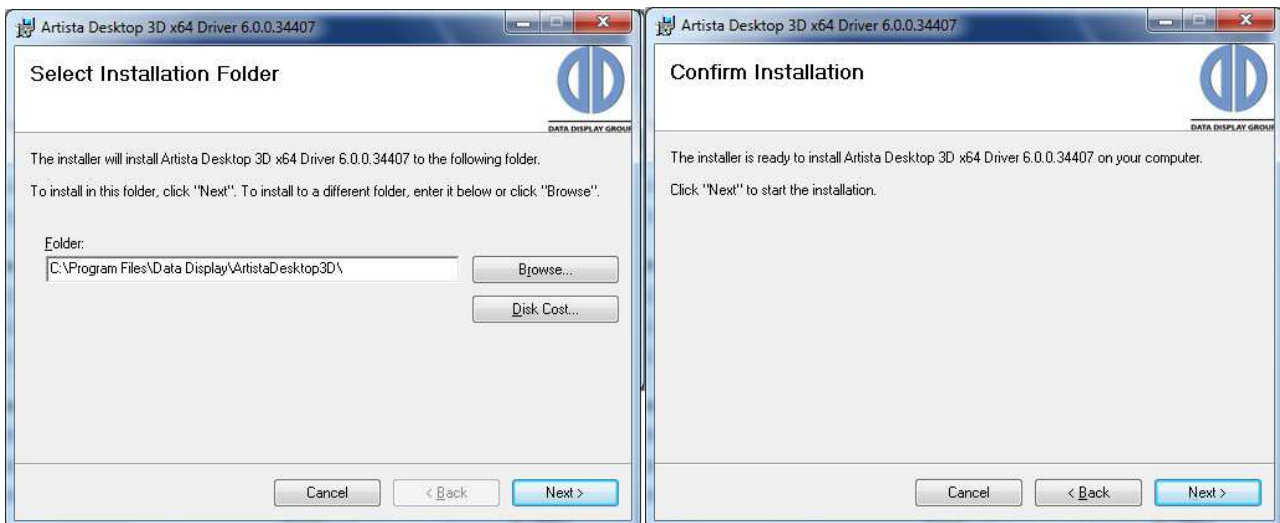
Select "Install Artista Desktop driver" on the Autorun Menu screen according to your Windows type.



Click "Next" to continue

The dialog box "End-User License Agreement" appears.

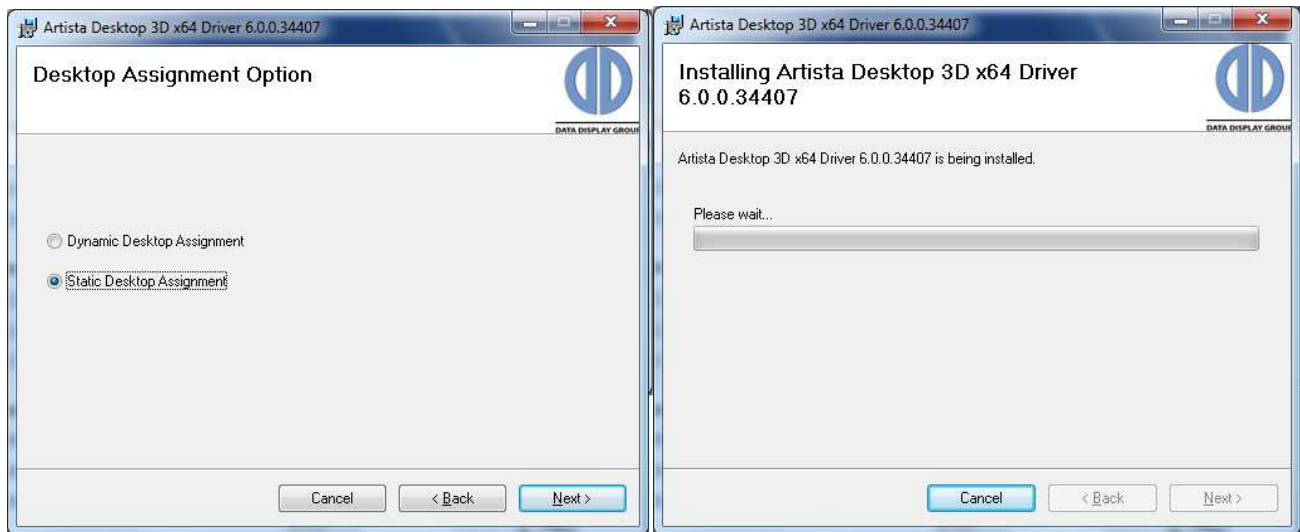
Select "I Agree / I accept the terms in the License Agreement" and then click "Next"!



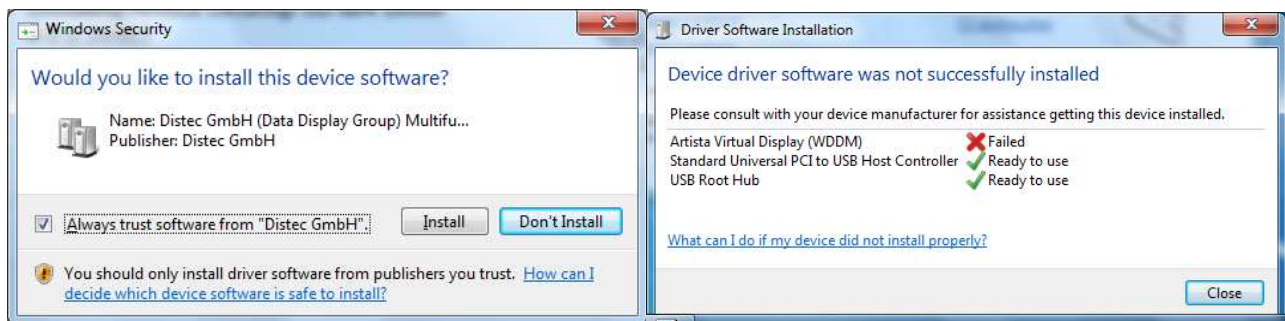
Click "Next" for default folder or "browse" to a different.

And then again click "Next / Finish" to start installation.





Select your Desktop Assignment and click “Next”.

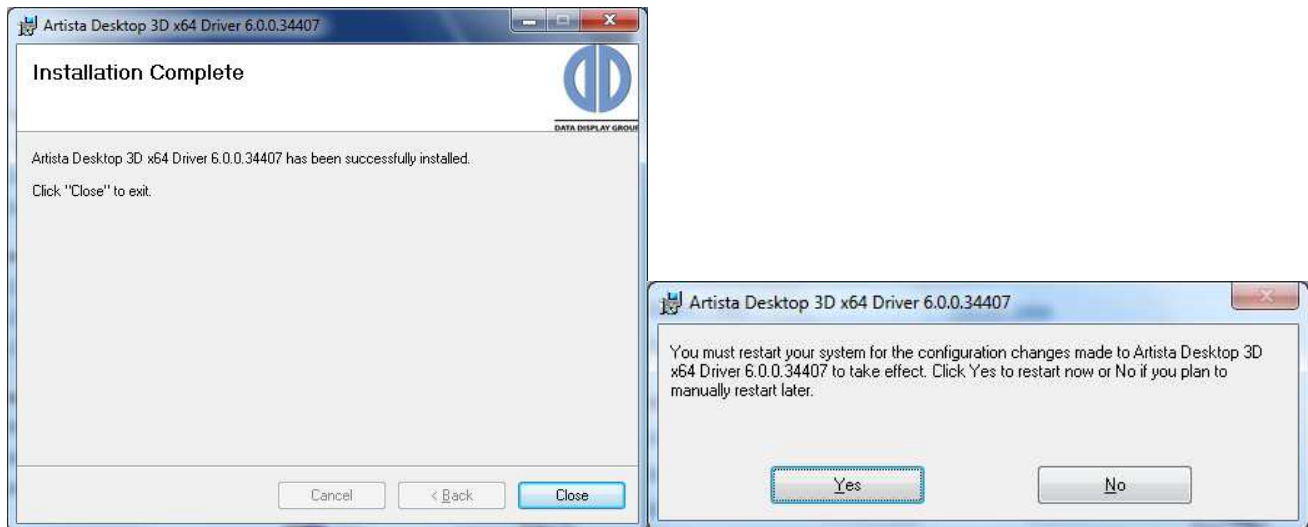


## Note:

For technical reasons, the “Artista Virtual Display (WDDM)” can be installed and fail during the installation of the Artista Desktop 3D drivers. After the prompted reboot, this is then in working order. Don’t be concerned! Make sure to install the miniports when prompted, otherwise the displays will not become active as desktop extension upon system reboot. Always notice the infos from the system tray to be sure what to do! On Windows7 64bit version, please select to “Thrust DataDisplay GmbH” when asked in order to install the signed drivers on your system!

Click “Close / Finish”.

The driver installation is now complete.

**Important Note:**

After finishing the pre-installation of the **ArtistaDesktop driver** you **must** restart your computer!

## Driver Post-Installation (Windows XP)

### 3.1.4 Artista Display Device installation

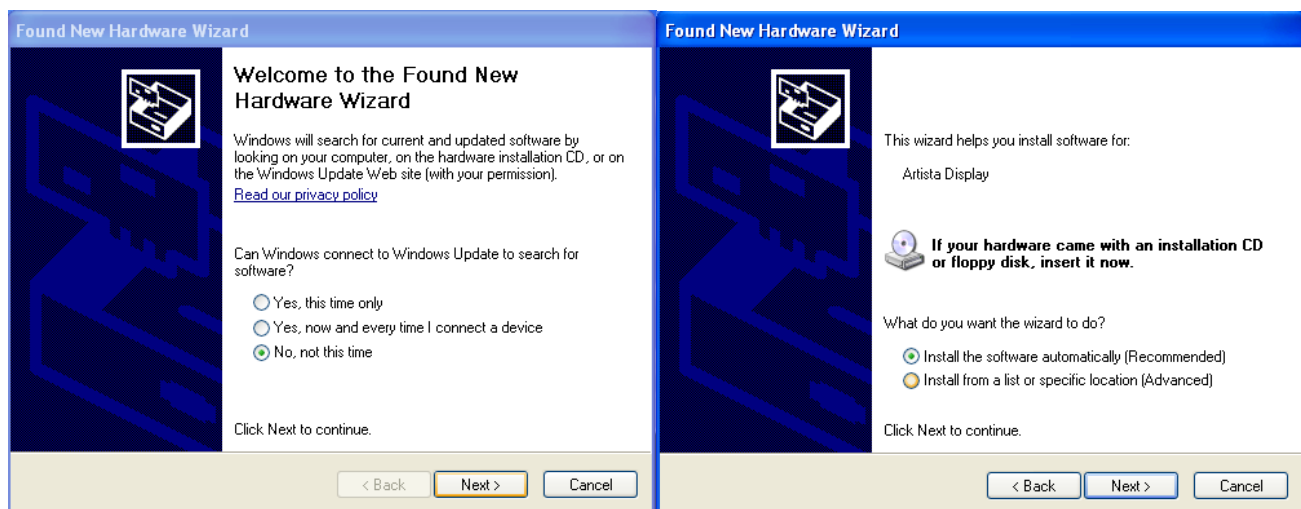
#### Important Note:

The driver pre-installation must have been successful in order to perform the driver post-installation.

#### Note:

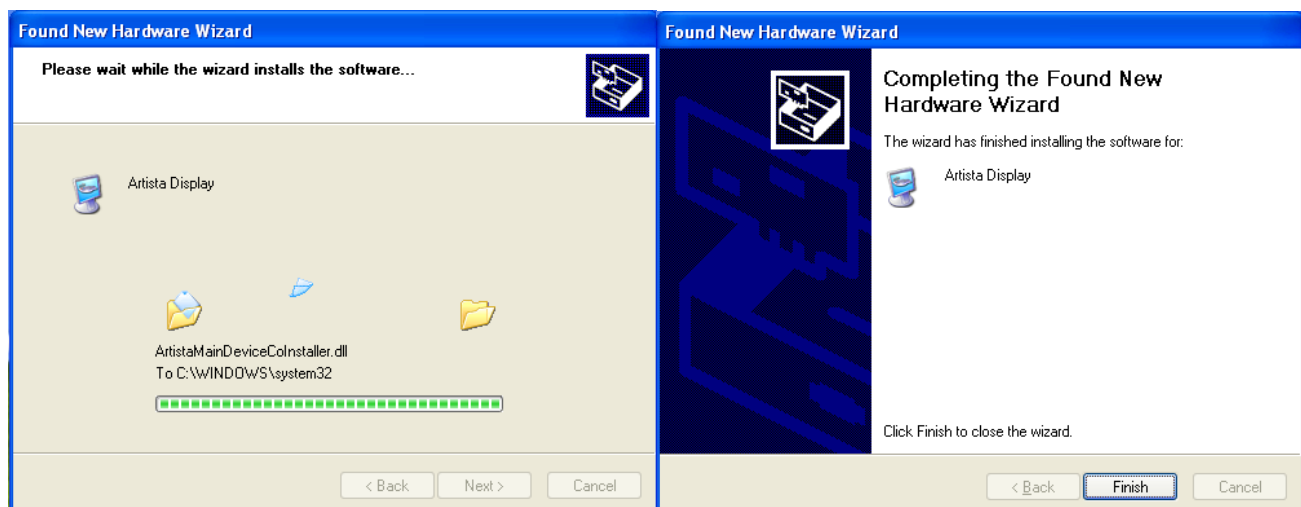
Please, remove all CDs / DVDs / USB Memory Sticks or other removable storage devices from your computer, once pre-installation is complete. Some CDs / DVDs may conflict with the post-installation process.

When connecting your **Artista Display Device**, a "balloon tip" will appear on the taskbar followed shortly thereafter by the "**Found New Hardware Wizard**" dialog. Follow the instructions as described below.



Select "No, not this time" and click "Next".

Select "Install the software automatically" and click "Next".



Click "Close / Finish".



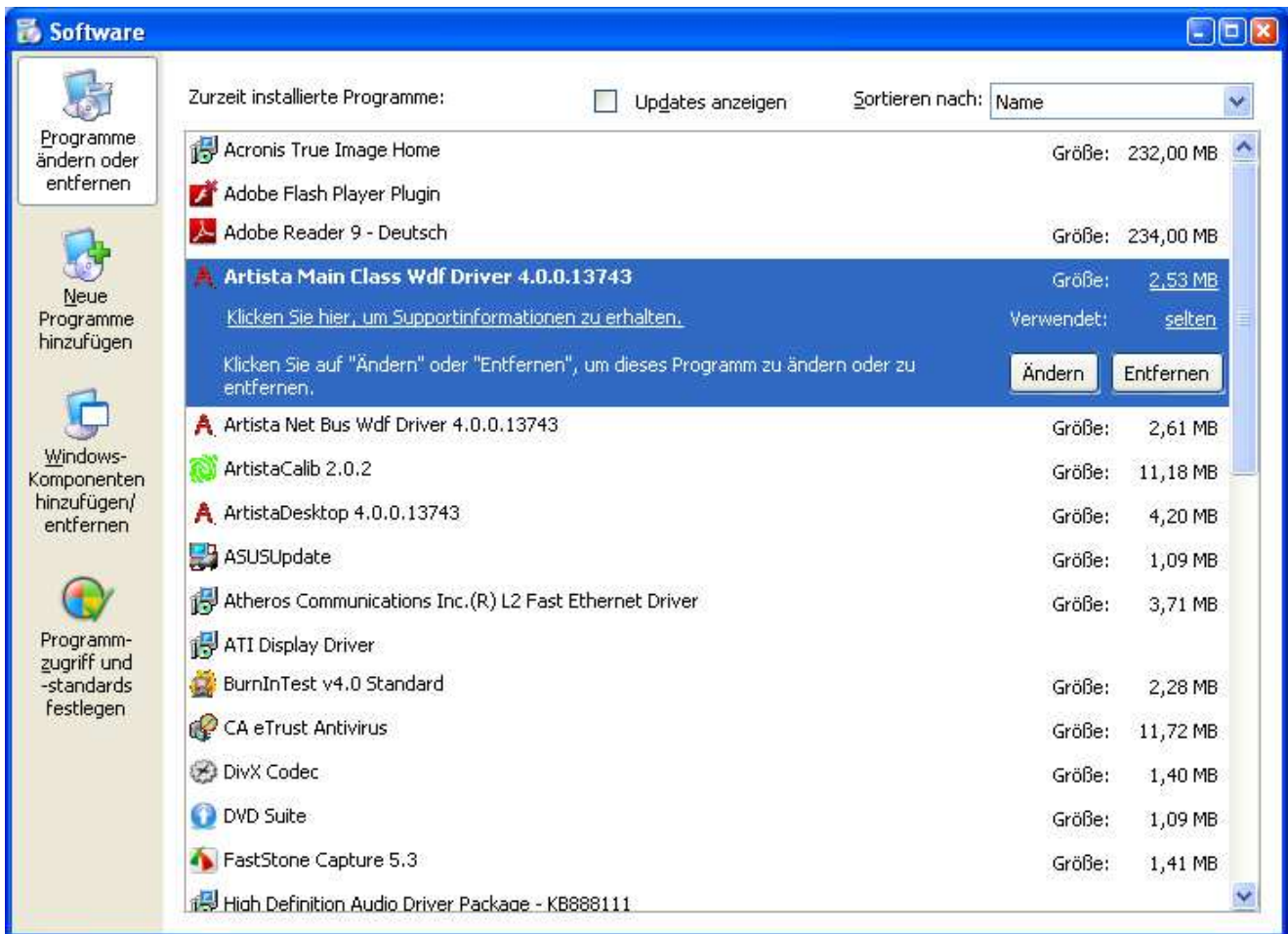
## 3.1.5 Touch Screen Driver Installation

To set up an Artista Display Device with Touch screen please follow the instructions below.

When you connect your Artista device, you are asked to install the Artista Display Driver. After completing these installations, you are then asked to install the Artista Touch Driver if your Artista is equipped with the Auto-Touch-Feature. After completing the installation of the Artista Touch Screen driver, you must restart the computer.

## 4 Uninstalling the drivers

To uninstall any of the Artista Drivers, select "**Start**" → "**Control Panel**" → "**Add or Remove Programs**". From the list, choose the driver you wish to remove from the system: "**Artista Main Class Driver**", "**Artista NET Bus Driver**" or "**ArtistaDesktop Driver**".



Now click the "Remove" button and follow the instructions.

After uninstalling any of the Artista drivers, you will need to restart the computer to possible device conflicts.

Repeat the process for each additional driver you wish to uninstall.

## 4.1.1 Using the Registry Cleaner

**Cleaner.exe** is a tool that removes all Artista-related entries from the system registry. In some cases you will need to run this utility, as sometimes the uninstaller itself cannot delete all entries from the registry. This tool is provided in the driver package and can be found in the *Artista\_Registry\_Cleaner* subfolder.

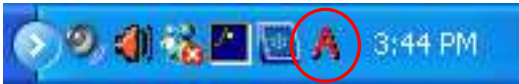
After uninstalling all Artista related drivers, simply double-click on the program file within the Explorer. (run as administrator, otherwise it will not get everything out of the registry!)

**After running the registry cleaner, the system must be restarted in order for the registry changes to take effect.**

**Not needed on Windows7 versions, since the cleanup happens upon de-installation!**

## 5 Artista Graphics Driver Usage

To ensure proper extended desktop functionality, it is required that the **Artista Service** be running. This is indicated by the **Artista Service Icon** (red "A") in the system tray on the taskbar.



### 5.1.1 Attach / Detach Artista Devices

#### Auto Attach

The Artista Desktop Extension driver includes an "auto attach" feature. After a successful post-installation and system restart<sup>3</sup>, the Artista display device becomes part of the Windows desktop. By default, the Artista displays are attached to the right of the primary display. You can move your **Artista** display to any position you wish using the drag and drop functionality featured in the "Display Properties" dialog.

To detach the **Artista** display from the desktop, right click on the desktop and from the context menu select "Properties" – "Settings". Click on the Artista display you want to attach/ detach to/ from the desktop and click on the check box titled "Extend my Windows desktop onto this monitor." This checkbox allows you to toggle back and forth between extended desktop mode or single monitor mode.

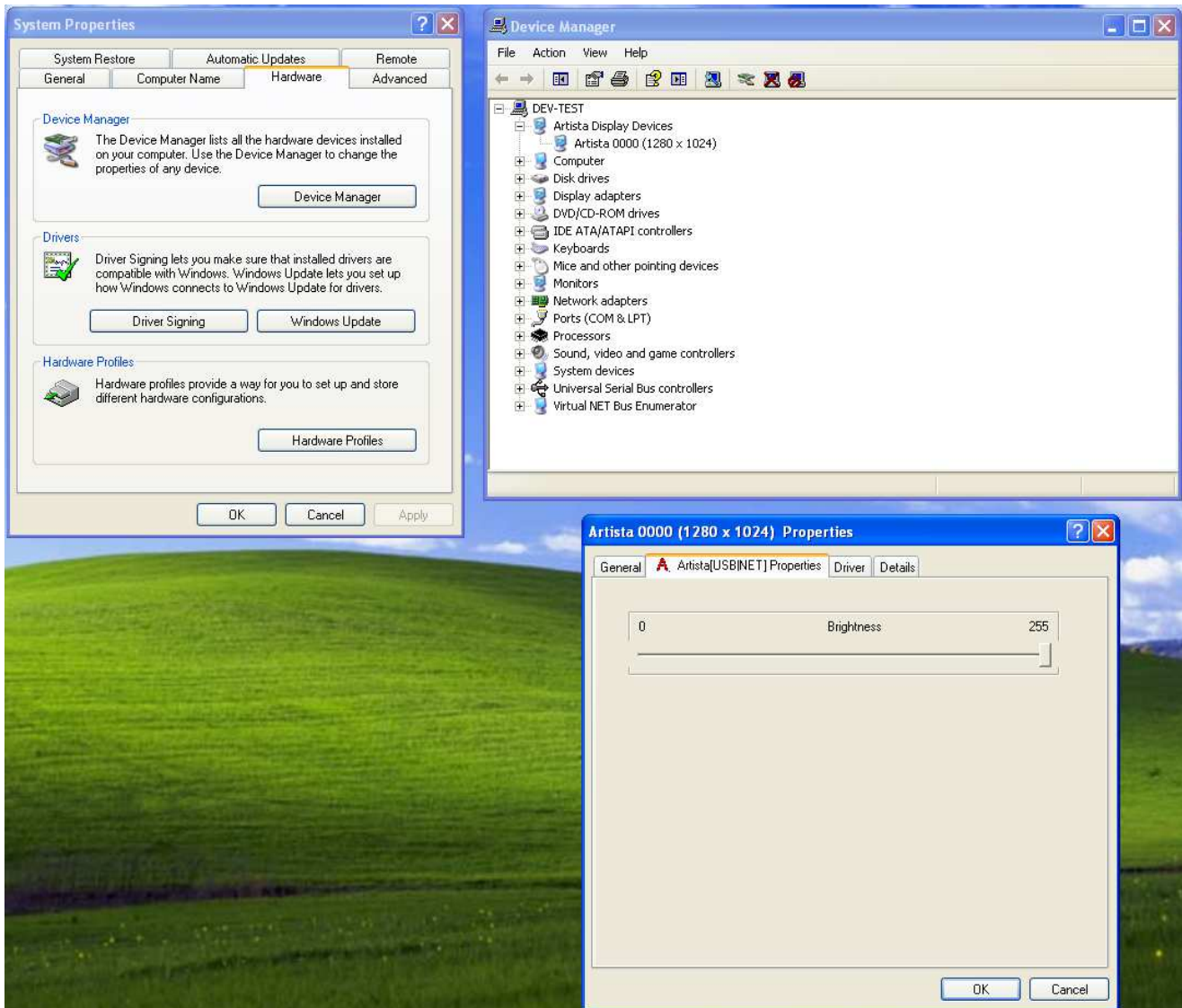


#### Important Notes

- When shutting down/ rebooting the system comes up with the last desktop settings. If you have detached your **Artista** from the desktop it remains detached.
- Using an **Artista Display Device** as primary monitor is not supported by DISTEC. Please keep in mind that troubles may occur when the primary **Artista Display Device** is disconnected.

<sup>3</sup> Pre-installation has installed one virtual graphics card; you do not need to reboot after post-installation of the first Artista Display Device.

## 5.1.2 Artista Devices in the Device Manager



From the Start Menu, select "Control Panel" -> "System", then select the "Hardware" tab. When double clicking on the selected **Artista Device**, the corresponding properties window opens. Here you can find the width, height and current desktop position of the **Artista Display Device**<sup>4</sup>

## 5.1.3 Adjusting the backlight

1. Open the system properties and select „Hardware“
2. Click on the “Device Manager” Button
3. Select the Artista card on which you wish to adjust the backlight brightness. Right-click on the icon and select “Properties”
4. Select the tab “Artista(USB|NET) Properties” and adjust the slider at the top.
5. After setting the brightness, click “OK” to save the new brightness setting.

<sup>4</sup> Desktop position data is only valid if **Artista Display Device** was attached before. Otherwise garbage data are shown.

---

## 6 Touch screen handling

Instructions regarding the calibration and use of the touch screen are described in an external document. Please refer to the document Artista\_Touch\_Calibration.pdf, included with this driver package.

## 7 News and Updates

The latest version of documents, drivers and software packages can be found at:

German: <http://www.datadisplay-group.de/support/downloads/>

English: <http://www.datadisplay-group.com/support/downloads/>

Our company network supports you worldwide with offices in Germany, Turkey, Great Britain and the USA. For more information please contact:

**Distec GmbH**

Augsburger Str. 2b  
82110 Germering  
Germany

Phone: +49 (0)89 / 89 43 63-0  
Fax: +49 (0)89 / 89 43 63-131  
E-Mail: [info@datadisplay-group.de](mailto:info@datadisplay-group.de)  
Internet: [www.datadisplay-group.de](http://www.datadisplay-group.de)

**Display Technology Ltd.**

5 The Oaks Business Village  
Revenge Road, Lordswood  
Chatham, Kent, ME5 8LF  
United Kingdom

Phone: +44 (0)1634 / 67 27 55  
Fax: +44 (0)1634 / 67 27 54  
E-Mail: [info@datadisplay-group.co.uk](mailto:info@datadisplay-group.co.uk)  
Internet: [www.datadisplay-group.co.uk](http://www.datadisplay-group.co.uk)

**Data Display S.r.l.**

Via Marco Polo, 9/D  
I-35010 Trebaseleghe (PD)  
Italy

Phone: +39 049 / 72 40 038  
Fax: +39 049 / 72 40 039  
E-Mail: [info@datadisplay-group.it](mailto:info@datadisplay-group.it)  
Internet: [www.datadisplay-group.it](http://www.datadisplay-group.it)

**Data Display Teknoloji Elektronik San Ve Diş Tic  
A.Ş.**

Kustepe Leylak Sok.  
Nursanlar İş Merkezi  
Kat. 6 No: 21  
Sisli / İstanbul  
Turkey

Phone: +90 (0)212 / 356 04 20  
Fax: +90 (0)212 / 356 04 25  
E-Mail: [info@datadisplay-group.com.tr](mailto:info@datadisplay-group.com.tr)  
Internet: [www.datadisplay-group.com.tr](http://www.datadisplay-group.com.tr)

**Apollo Display Technologies, Corp.**

87 Raynor Avenue, Unit 1  
Ronkonkoma, NY 11779  
United States of America  
Phone: +1 631 / 580-43 60  
Fax: +1 631 / 580-43 70  
E-Mail: [info@datadisplay-group.com](mailto:info@datadisplay-group.com)  
Internet: [www.datadisplay-group.com](http://www.datadisplay-group.com)