

Getting Started

with

BeFREE 10



www.tipro.net

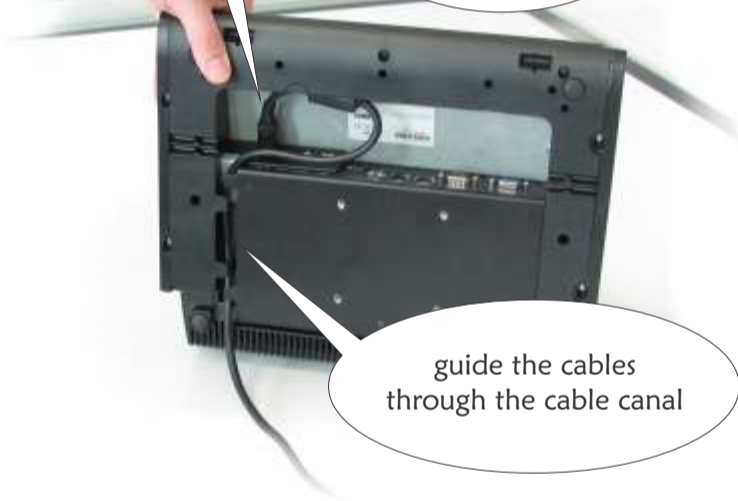
P/N 42952/1.0

1

connect the power supply

provide sufficient airflow around the power supply *

guide the cables through the cable canal



2

press the ON button



⚠ WARNING:

This is a Class A product. In a domestic environment this product may cause radio interference in which case the user may be required to take adequate measures.

*operating ambient temperature range is 0°C to 40°C

3

First install operating system. Use external storage device.



the installation should start automatically

then install drivers for BeFREE15 module



calibrate the touch screen



4

5

install ChangeMe

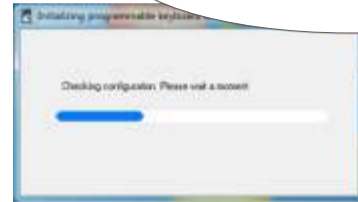


6

optionally run ChangeMe to change settings for each Tipro module



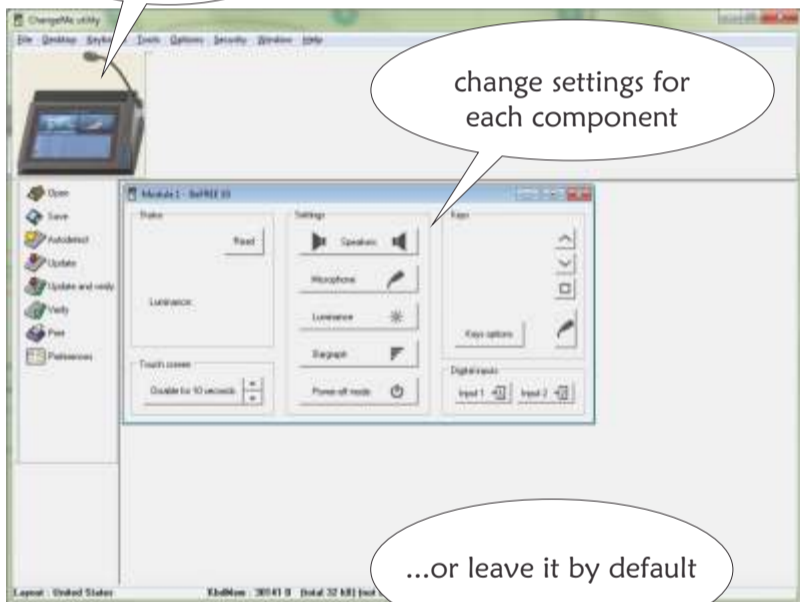
your configuration will be automatically detected



7

click on the module

change settings for each component



...or leave it by default

8

when finished, save the contents to a file

and program it to the configuration!

