

Getting Started

with

BeFREE 15



www.tipro.net

P/N 42951/1.0

1

connect the power supply

provide sufficient
airflow around the
power supply *

guide the cables
through the cable canal

*operating ambient temperature range is 0°C to 40°C

2

press the ON button

⚠ WARNING:

This is a Class A product. In a domestic environment this product may cause radio interference in which case the user may be required to take adequate measures.

3

First install operating system.
Use external storage device.



the installation should start automatically

4

then install drivers for BeFREE15 module



calibrate the touch screen



5

install ChangeMe

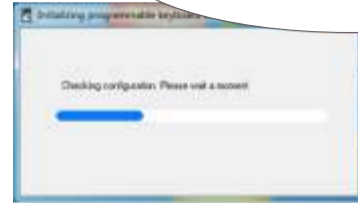


6

optionally run ChangeMe to change settings for each Tipro module



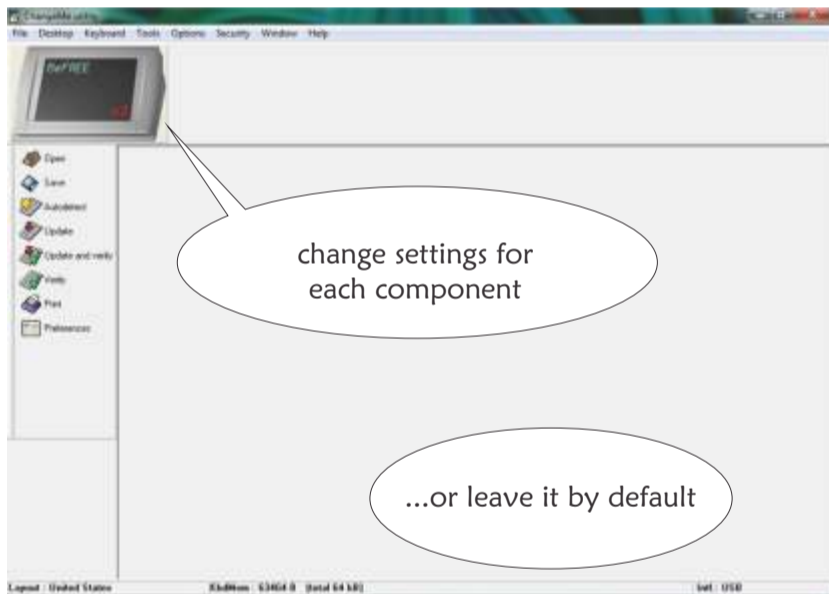
your configuration will be automatically detected



7

change settings for each component

...or leave it by default



8

when finished, save the contents to a file

and program it to the configuration!

