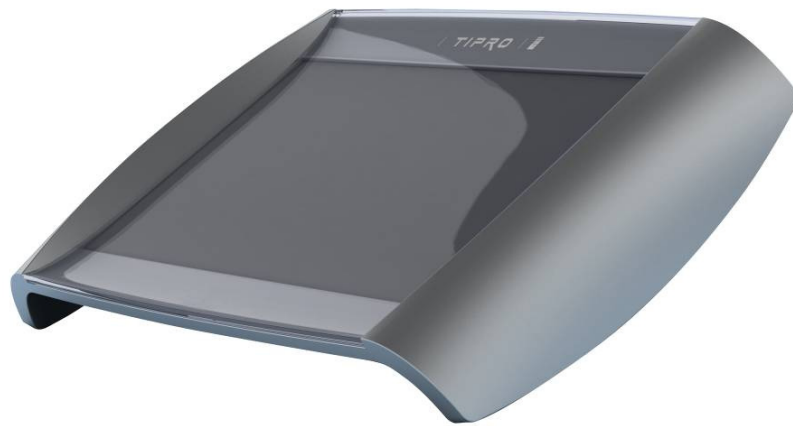


BLUE+ 10

Versatile USB Graphic Display



TECHNICAL OVERVIEW

Description and Application

BLUEplus10_TO_05.doc

Version 05

May 17, 2011



[TIPRO]

keyboards focusing on your future needs.

TABLE OF CONTENTS

A. GENERAL INFORMATION	A-1
A.1. Highlights	A-1
A.2. Technical Characteristics.....	A-1
B. INTEGRAL PARTS AND FUNCTIONALITY.....	B-1
B.1. Video Controller Board	B-1
B.2. Transparent Protective Cover.....	B-1
B.3. Mounting/Integration.....	B-2
B.4. Installation and Operation.....	B-2
B.5. Accessory.....	B-3
B.6. Kensington Lock	B-3
C. ORDERING CODES.....	C-1
D. REFERENCES.....	D-1
E. NOTICES	E-1
E.1. Disclaimer	E-1
E.2. Copyright Notice	E-1

A. GENERAL INFORMATION

The BLUE+ 10 (originally referred to as CashTray) was originally designed as a combination of a display and a tray for change (banknotes, receipts, coins, etc.) at a point of sale, but it can also be used (without the tray) as a generic display in various applications. Electrically it represents a USB graphic display device, operating as a secondary computer display, either in “Extended Desktop” (as an extension of the primary monitor). Various operating systems are supported as well as a number of standard video formats.

A.1. Highlights

FEATURES

- ◆ 10.2” wide-screen TFT LCD protected by glass
- ◆ replaceable antiglare protective cover
- ◆ retractable leg enables two different inclinations (5° and 30°)
- ◆ provision for VESA 75 mounting
- ◆ high-speed USB video device
- ◆ secondary display operating in “Extended Desktop” mode
- ◆ more than 100 displays can be connected to a single computer
- ◆ DVD quality video playback

APPLICATIONS

- ◆ CashTray with integrated graphic display
- ◆ customer display
- ◆ information/advertisement display

A.2. Technical Characteristics

ELECTRICAL

- ◆ **power supply:** 12V \pm 5% (from an external AC/DC adapter, e.g. TM-VPF)
- ◆ **current consumption (12V):** 700mA_{TYP} (1000mA_{MAX})
- ◆ **current consumption (USB):** 1 mA_{TYP} (10 mA_{MAX})
- ◆ **power connector:** 2.1 mm DC power socket/jack
- ◆ **interface connector:** USB B receptacle

MECHANICAL

- ◆ **casing:** plastic ABS
- ◆ **colour (top part):** aluminium – C5
- ◆ **colour (other parts):** black – C15
- ◆ **net dimensions:** 299 x 194 x 56 (W/D/H) [mm]
- ◆ **weight:** 1550 g (approximately)
- ◆ **protection (sealing) grade:** IP 40 (according to EN 60529)

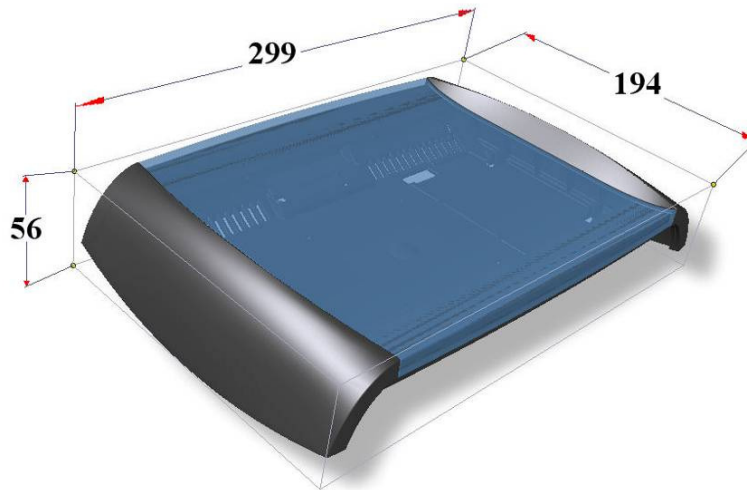


Figure A.1 Physical dimensions

ENVIRONMENTAL

- ◆ **operating ambient temperature range:** 0°C to +40°C
- ◆ **storage ambient temperature range:** -10°C to +50°C
- ◆ **relative humidity range:** 20% to 80% (non-condensing)

TFT LCD

- ◆ **size:** 10.2" diagonal
- ◆ **aspect ratio:** 17:10
- ◆ **native resolution:** 1024 x 600 pixels
- ◆ **luminance (brightness):** ≥ 200 cd/m² (typical)
- ◆ **contrast ratio:** $\geq 300 : 1$ (typical)
- ◆ **backlight type:** LED
- ◆ **backlight lifetime:** 20,000 hours (minimal)

B. INTEGRAL PARTS AND FUNCTIONALITY

B.1. Video Controller Board

Integrated video controller board translates USB video input signals into the respective LVDS signals for the TFT LCD. It requires installation of specific drivers in order to operate properly as a secondary display in “Extended Desktop” mode. Various operating systems are supported as well as a number of standard video formats (e.g. WMV, QT, ...).

SUPPORTED OPERATING SYSTEMS

- ◆ Windows XP (32-bit)
- ◆ Windows 7 (32-bit and 64-bit)
- ◆ Windows Server 2003 (32-bit)

B.2. Transparent Protective Cover

The protective cover acts as a tray for banknotes, coins, receipts, ... in the CashTray applications. It is made of polycarbonate with a special coating providing an antiglare effect (light transmission is approximately 80% over the visible light spectrum from 400 nm to 700 nm) and improved surface hardness (approximate pencil hardness is 2H per ASTM D 3363).

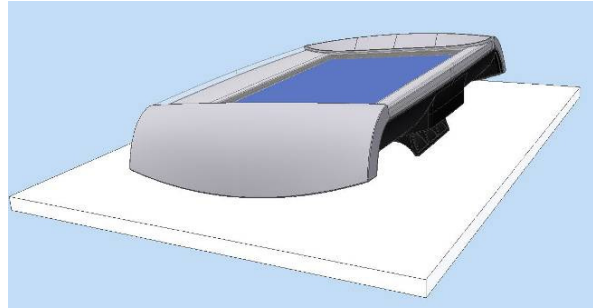


Figure B.1 Protection cover

B.3. Mounting/Integration

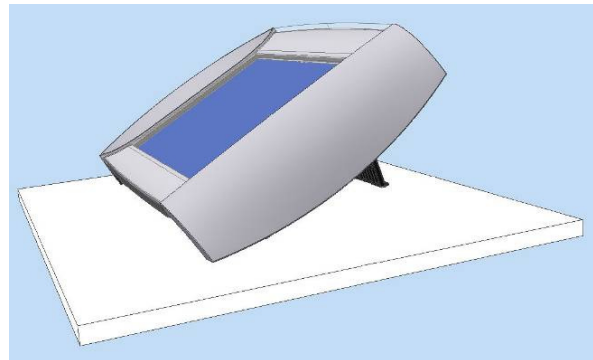
As a CashTray

- ◆ display inclination is 5°



As a desktop customer display

- ◆ display inclination is 30°



As a VESA mount display

- ◆ using VESA 75 fixing holes

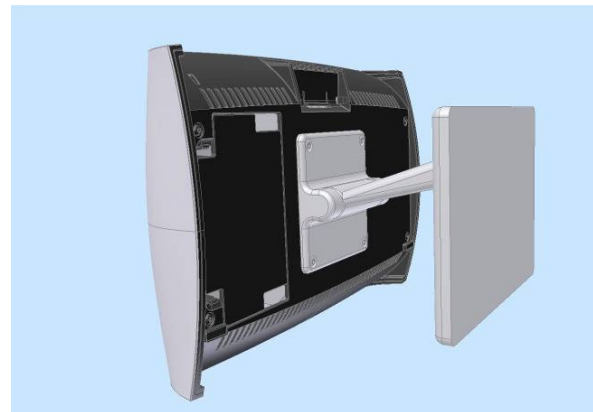


Figure B.2 Mounting methods

B.4. Installation and Operation

Detailed instructions on how to install the drivers and use the display are described within the Getting Started document enclosed within the packaging.

B.5. Accessory

BLUE+ 10 is supplied with a USB interface cable (USB B plug to USB A plug, 2.5 m long), 12V Power Supply Unit (AC/DC adapter) and European power cord. The respective Getting Started document is enclosed within the packaging.

B.6. Kensington Lock

The small aperture (see Figure B.3 below) in the rear side of the BLUE+ 10 can be utilized by a locking device in order to securely attach the BLUE+ 10 to a neighbouring fixed object (as a protection against theft).

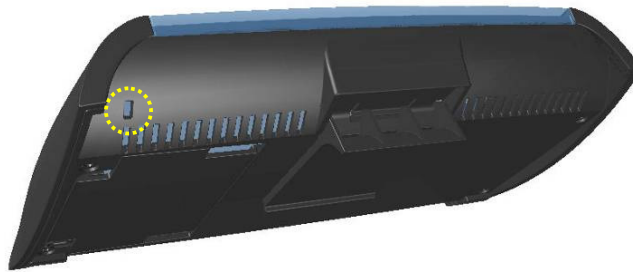


Figure B.3 Kensington lock

C. ORDERING CODES

		1		2	3	4		5	6	7		
C	T	-	102B	-	U	A	C	-	C15	C5	-	xxx

CT – CashTray (BLUE+ 10)

1 – TFT LCD

102B : 10.2” wide-screen TFT LCD, 1024 x 600 pixels, 400 cd/m2

2 – Video Interface

U : USB

3 – Video Controller Board

A : based on Artista USB video controller

4 – Display Cover Option

0 : without protective cover

C : with protective cover

5 – Housing Colour (bottom part)

C15 : black

6 – Housing Colour (top part)

C5 : aluminium

7 – Custom Version

Three-digit number reserved for product customizations. It is omitted in case of standard version.

D. REFERENCES

1. “BLUE+ 10” – Getting Started

E. NOTICES

E.1. Disclaimer

Information furnished by Tipro is believed to be accurate and reliable. However, Tipro makes no representations or warranties regarding the accuracy or completeness of the contents of this document and reserves the right to make changes to specifications and product descriptions at any time without notice.

E.2. Copyright Notice

© 2007-2011 Tipro. All rights reserved. Trademarks and registered trademarks are the property of their respective owners.