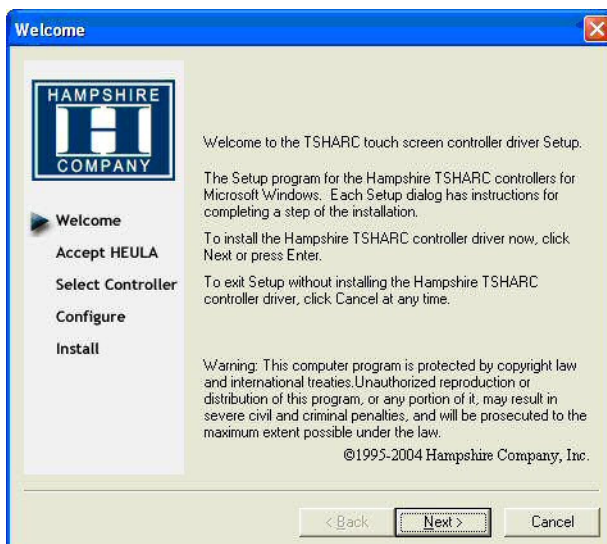
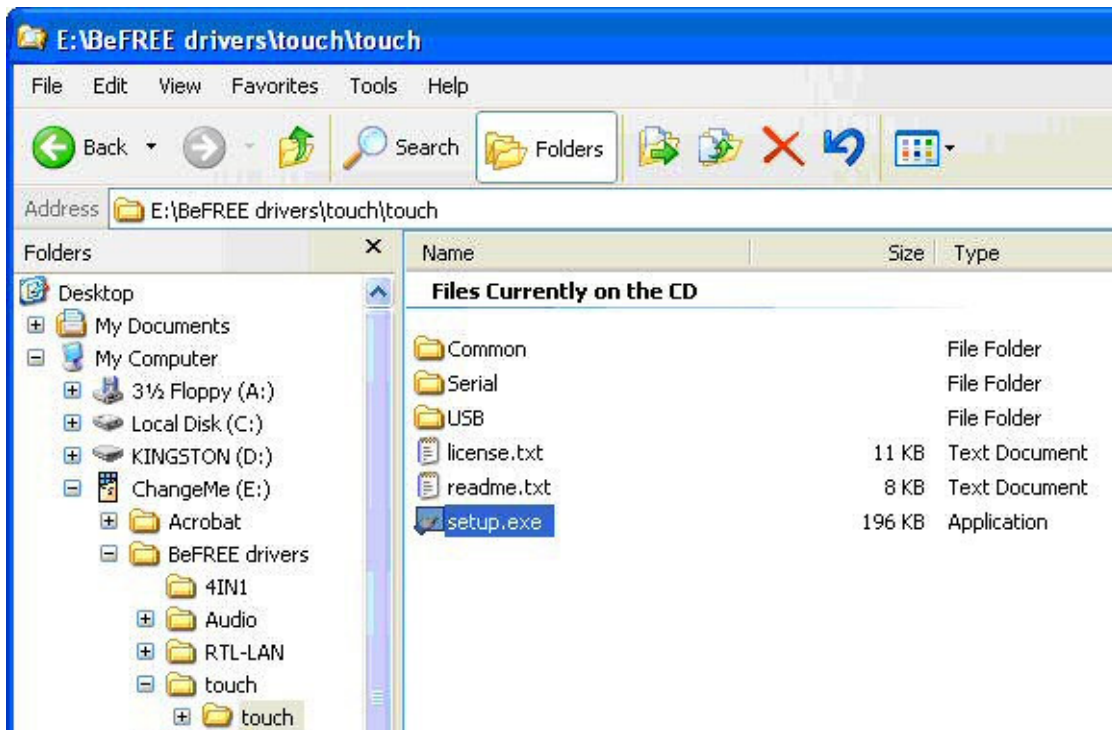


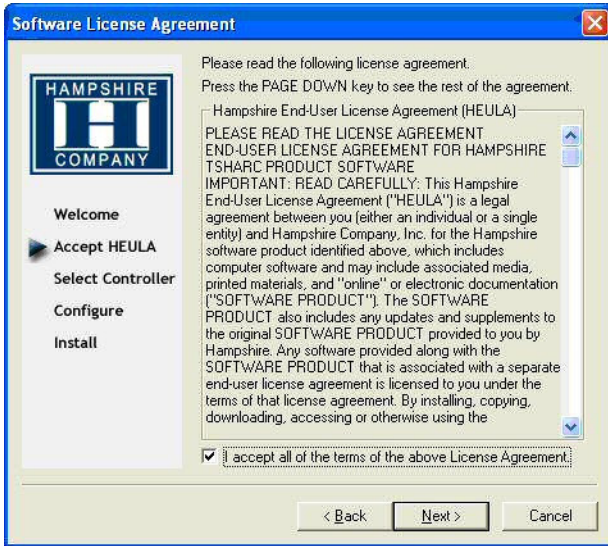
Installation of Touchscreen drivers In Windows

Run installation program from CD

Location <CD>BeFREE drivers\touch\touch\setup.exe
Double click to start.



Click Next >



Accept licence agreement and click Next >

Select Controller

Select Controller Type : 12 or 10 Bit Controller

Select Controller interface: Serial (RS232)



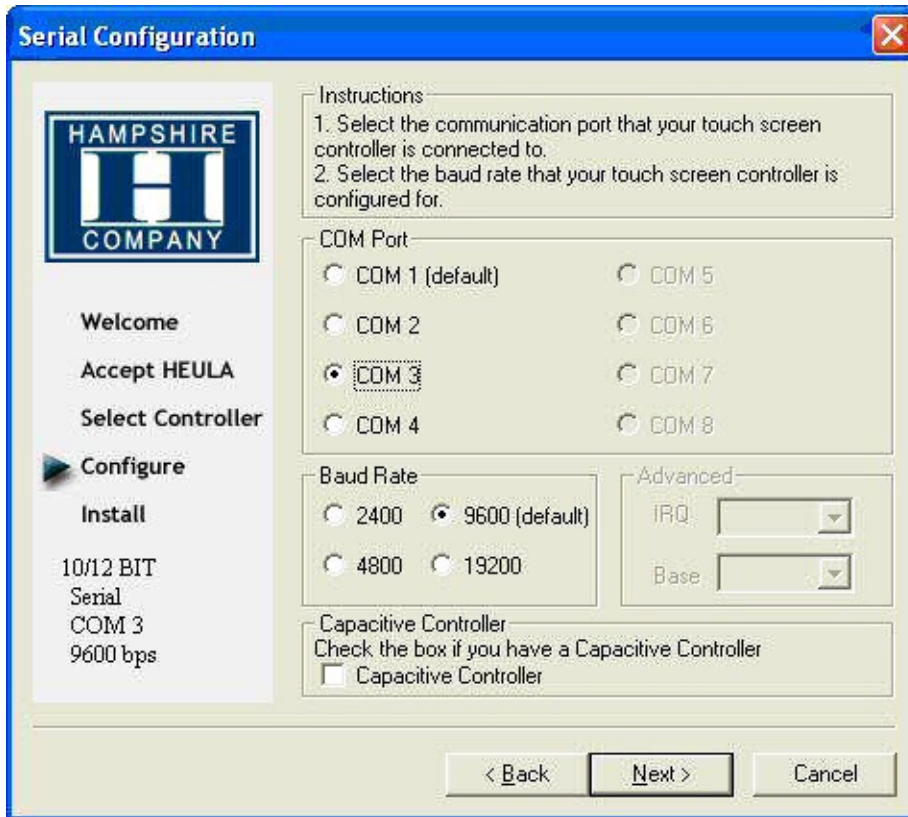
Automatic

Press Autodetect button.



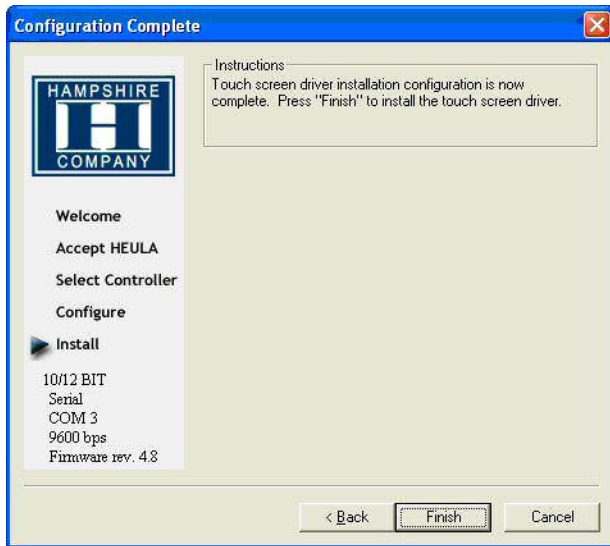
Manual

If -for some reason- Autodetect does not work, the settings can be entered manually:
Don't press Autodetect, just press Next >



The correct settings are:
COM Port: COM 3
Baud Rate: 9600
No capacitive controller.

Press Next >



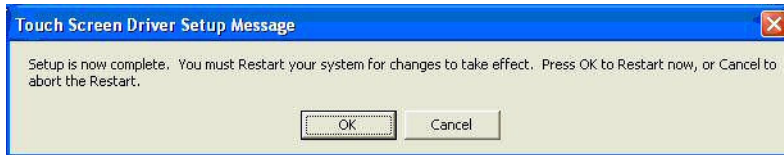
Press Finish



Press Continue Anyway (the software is safe)

Restart

The system will need to restart for the touchscreen to work.
Press OK

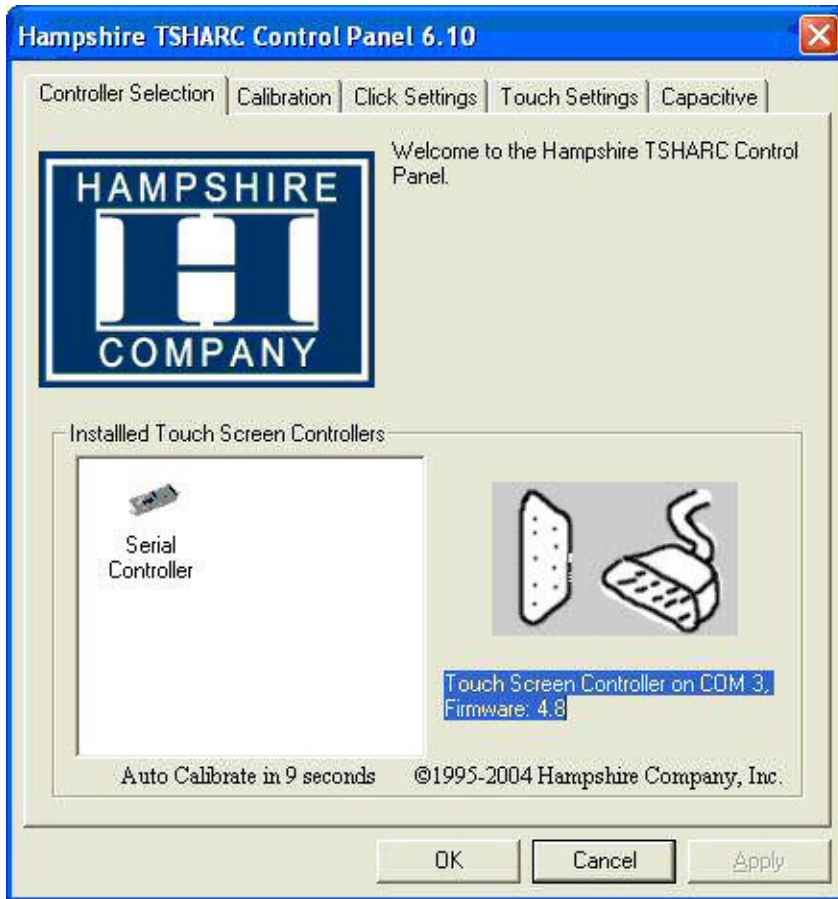


Calibration

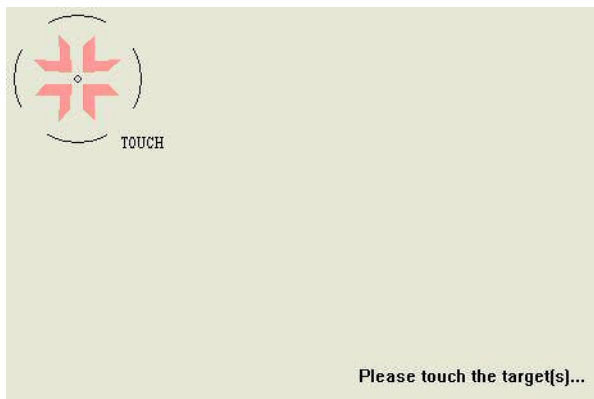
Run the Hampshire TSHARC Control panel



The calibration will start automatically after a few seconds, or you can go to the Tab Calibration and click the target to start.



Calibrate the touchscreen by touching the 4 targets.



Press Accept and then OK to close the dialog and save the calibration